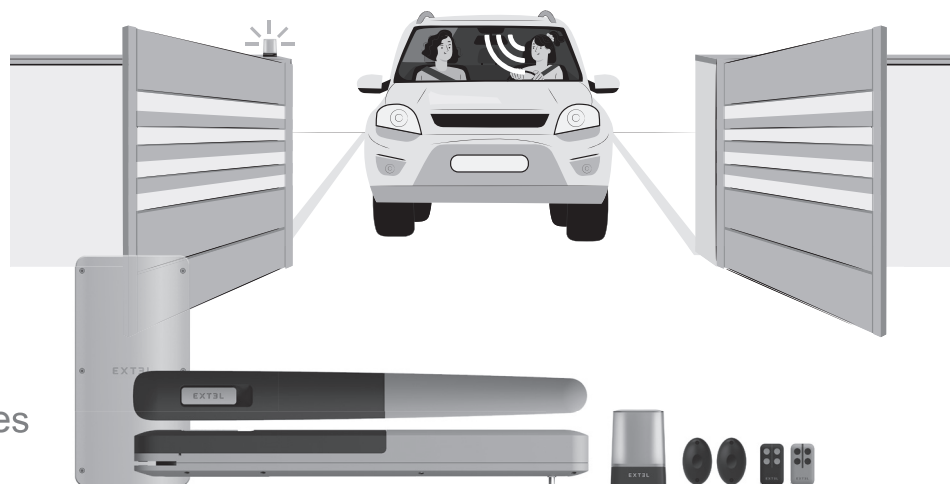


EXTEL

umii



EN XV250
V3 ELECTRIC GATE
OPENER KIT
 With cylinders - For swing gates

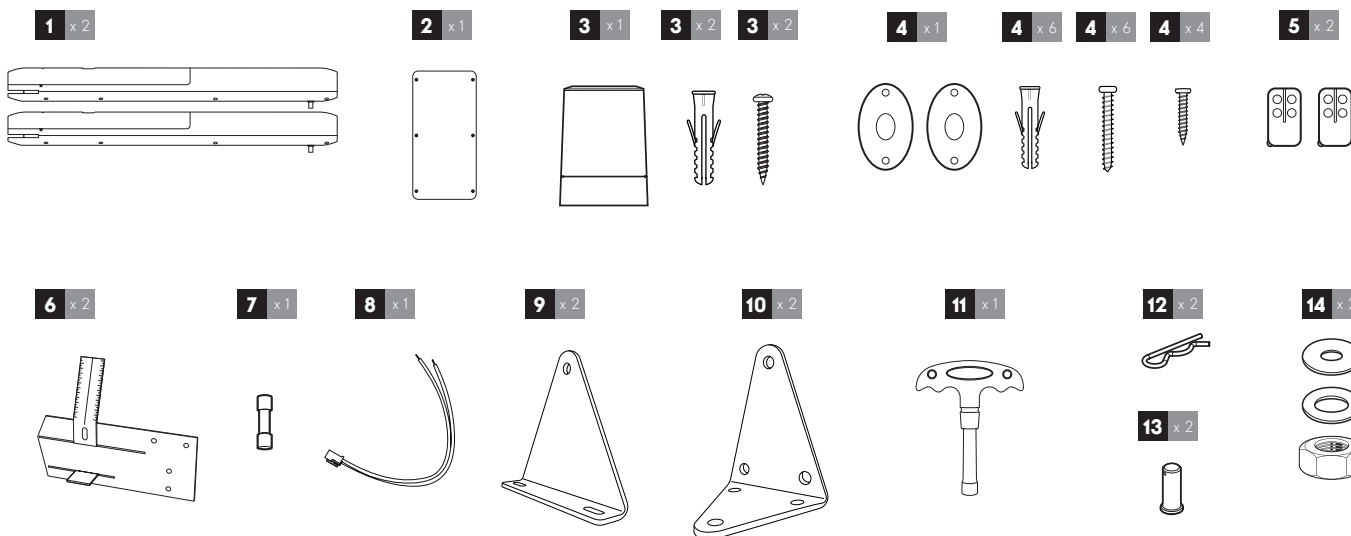
Ref. 761003

Thank you for purchasing an EXTEL automatic gate opener.

This document is a quick start guide detailing the main installation steps as well as the equipment required. To perform the installation, please download the installation manual at the following address: www.avidsen.com

Warning: The safety instructions and installation instructions can be found in the installation manual. Follow all these instructions, as an incorrect installation can cause serious injuries.

1. DESCRIPTION



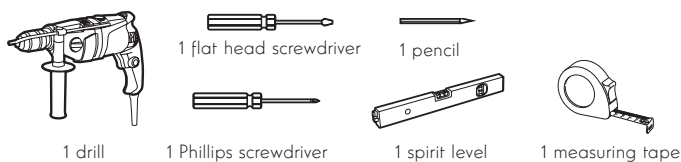
1	Actuators
2	Switchgear
3	Flashing light and its screws
4	Photocells and their screws
5	Remote control




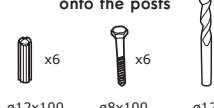
6	Installation template
7	Backup fuses
8	Accessories for the solar kit
9	Gate mounting bracket
10	Post mounting bracket

11	Override key
12	Pin
13	Pin axis
14	Locking nut

2. EQUIPMENT REQUIRED (NOT SUPPLIED)

The tools and screws required for the installation must be in good condition and compliant with applicable safety standards. Please use screws compatible with the bracket to which the motors will be attached (e.g. anchoring studs, threaded rod with chemical seal, etc.)



<p>Flashing light</p>  <p>3m cable 2 x 0.5mm²</p>	<p>Motor</p>  <p>8m cable 2 x 1.5mm²</p>	<p>Photocells</p>  <p>10m cable 4 x 6/10</p>	<p>Attaching the brackets on the gate:</p> <p>Choose a screw/nut system compatible with the thickness of the gate. There are 4 attachment points</p>	<p>Attaching the motors onto the posts</p>  <p>ø12x100 x6 ø8x100 x6 ø12</p>
--	---	--	---	---

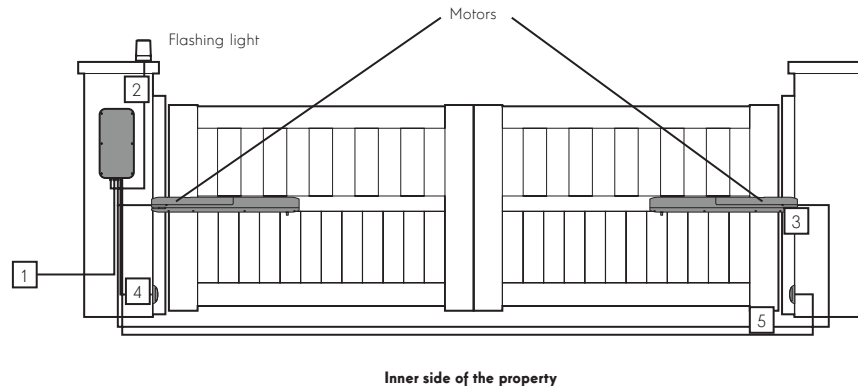
3. INSTALLATION



Safety guidelines: Please refer to the installation manual for all safety instructions.
To perform the installation, please download the installation manual at the following address: www.avidsen.com

Overview:

The cables used must be appropriate for outdoor use (such as H07RN-F for example). The cable run between the two posts must comply with applicable standards (NFC 15-100). The power cable of the opposite geared motor must run 80cm deep with red warning mesh.



List of cables:

	2-wire	Cable	Max length
1	230VAC power line	Cable 3 x 2.5mm ² (more than 30m long) Cable 3 x 1.5mm ² (less than 30m long)	Unlimited
2	Flashing light	Cable 2 x 0.5mm ²	15m
3	Secondary motor	2 x 1.5mm ² cable	10m
4	Reception photocell (RX)	4 x 6/10 cable	10m
5	Transmission photocell (TX)	4 x 6/10 cable	10m

The installation is a 4-step process:

1. Installing the cylinders, the flashing light and the photocells (the main motor is fixed to the post with the power supply). Refer to the instructions and the installation template.

2. Electrical connection:

- of the flashing light to the electronic card (this is mandatory from the time that the gate is installed at the roadside).
- of the photocells to the electronic card.
- of the transformer to the power supply. This connection must be performed by qualified personnel (e.g. electrician).
- of optional products such as a videophone, a keypad or a backup battery.

3. Getting started from the EXTEL UMII application

Download the app to your smartphone:

Warning: Only switch on the system once all connections have been made.



Register on the EXTEL UMII app and add your motor (the blue light on the motor should flash, if it doesn't, perform a reset). Then follow the steps for a faster setup. Advanced settings can be configured in the app. Please refer to the manual for more information.

Getting started from the electronic card "in manual mode"

- Initiate the auto-learning process: Press the button 3 times. The orange light will flash whilst the motor sweep learning process is in progress.
- Add a remote control: Press the button once. The green light will flash until the remote control is paired. Press the button on the top left of the remote control to pair it with the motor.
- Reset: Press and hold the button for 8 seconds. The light will flash purple 5 times to confirm that the reset is complete. The light will flash blue again to indicate that you can add the motor to the app.

4. Operational testing: To familiarise yourself with the automatism and ensure it operates properly, read the chapter on usage and conduct operational tests (open/close, initiate obstacle detection, cut the photocell beam). Upon completion of these tests, you may have to modify certain settings (e.g. motor power).

4 - EU DECLARATION OF CONFORMITY

avidsen declares that the equipment complies with the essential applicable requirements of RED Directive 2014/53/EU.

Directive 2014/35/EU: (protection of users' health and safety)

Directive 2014/30/EU: (protection requirements relating to electromagnetic compatibility).

Directive 2014/53/EU: (efficient use of the radio spectrum, in order to avoid harmful interference).

The full declaration of compliance is available on the website www.avidsen.com

Tours, 12/06/2023

Alexandre Chaverot, CEO

