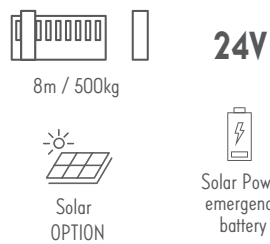


EN Swip 500 - CONNECT Motor drive for sliding gates

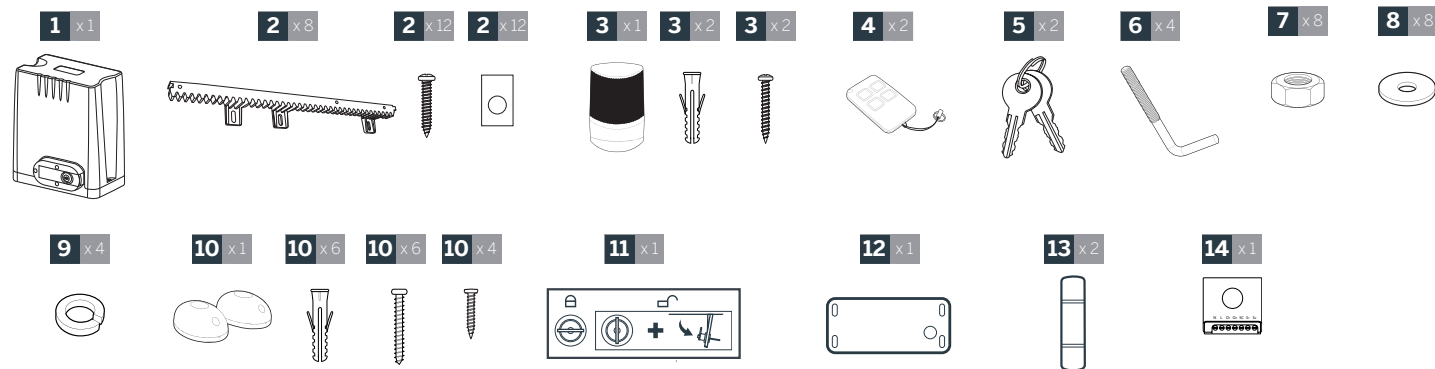
Ref. 510064
V2



This document is a quick start guide detailing the main installation steps as well as the equipment required. To perform the installation, please download the installation manual at the following address: www.mythomson.com

Warning: The safety instructions and installation instructions can be found in the installation manual. Follow all these instructions, as an incorrect installation can cause serious injuries.

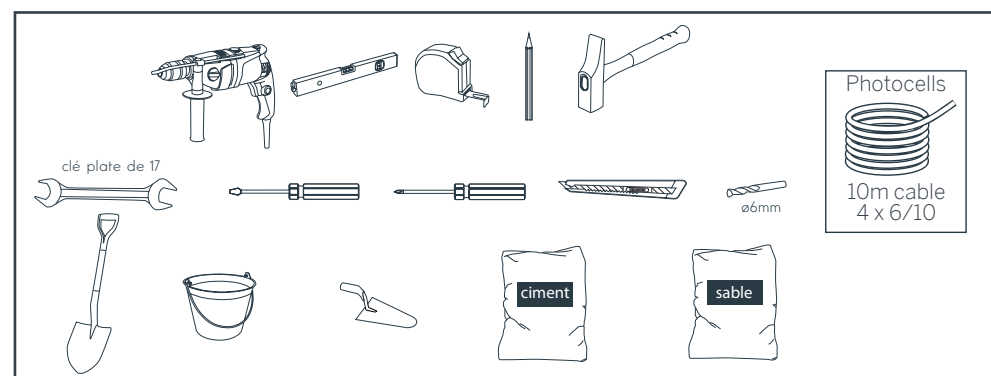
1. DESCRIPTION



1	24 V geared motor	6	Floor fastening pin	11	Disengagement label
2	50cm rack and screws	7	M8 nut	12	Installation template
3	Flashing light and screws	8	Ø8 washer	13	Backup fuses
4	Remote control	9	Ø8 spring washer	14	Guardian Wi-Fi receiver module
5	Release key	10	Photocells and their screws		

2. EQUIPMENT REQUIRED (NOT SUPPLIED)

The tools and screws required for the installation must be in good condition and compliant with applicable safety standards.

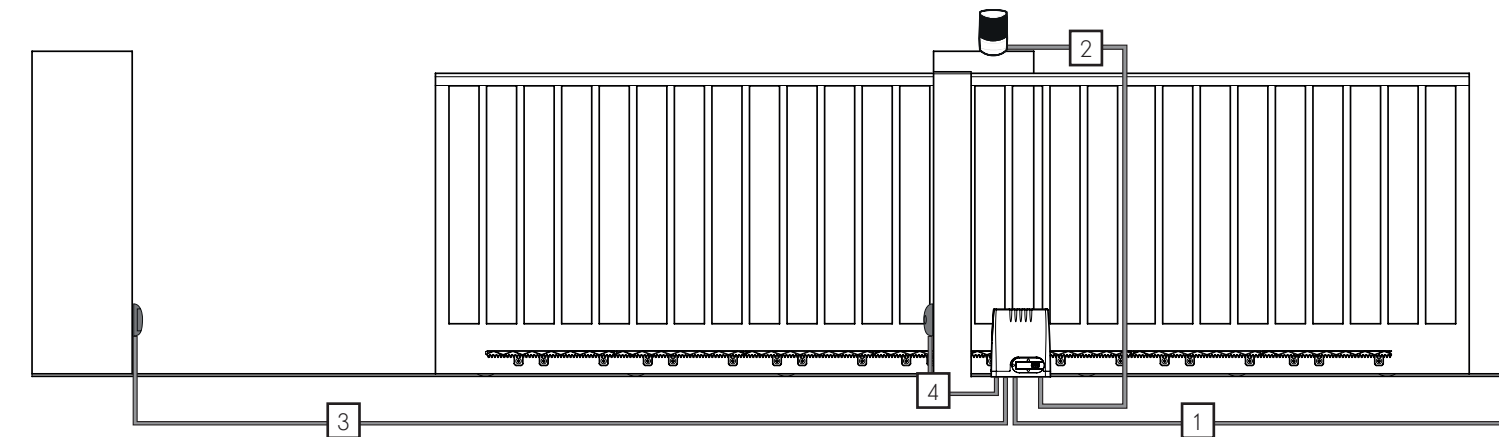


3. INSTALLATION

Safety guidelines: please refer to the installation manual for all safety instructions.
To perform the installation, please download the installation manual at the following address: www.mythomson.com

Overview:

The cables used must be appropriate for outdoor use (such as H07RN-F for example).
The cable run between the two pillars must comply with applicable standards (NFC 15-100).
The table below contains our recommendations for the choice of cable type.



List of cables:

	Connection	Cable	Max length
1	230Vac power line	Cable 3 x 2.5mm ² (more than 30m long) Cable 3 x 1.5mm ² (less than 30m long)	Unlimited
2	Flashing light	Cable 2 x 0.5mm ²	15m
3	Transmission photocell (TX)	4-strand telephone cable	10m
4	Reception photocell (RX)	4-strand telephone cable	10m

The installation is a 4-step process:

1. Geared motor installation with prior construction of a concrete base if necessary. Installation of the racks and flashing light.
2. Electrical connection:
 - of the flashing light to the electronic card
 - of the photocells to the electronic card
 - of the Guardian module on the electronic card
 - of the transformer to the mains. This connection must be performed by qualified personnel (electrician, etc.).

3. Adjustments and operation:

Note: Only switch on the geared motor once all connections have been made.

- Read the installation manual chapter on simple adjustments
- Launch the movement self-learning programme (press "+" for 3 seconds)
- Programme the remote controls:
 - press "-" for 3 seconds
 - press "SET"
 - press the remote control button to be memorised
 - Repeat the operation for each remote control
- Choice of operating mode:

By default, automatic closing is deactivated. To activate it, you must install a pair of photocells

4. Operational testing: To familiarise yourself with the automatism and ensure it operates properly, read the chapter on usage and conduct operational tests (open/close, initiate obstacle detection, cut the photocell beam). Upon completion of these tests, you may have to modify certain settings (e.g. motor power) and redo the self-learning.

4. DECLARATION OF CONFORMITY

With the RED directive, AVIDSEN declares that the following equipment: Motor drive for sliding gates SWIP 500 CONNECT reference 510064 complies with the RED 2014/53/EU directive and its conformity has been assessed pursuant to the applicable standards in force:

- RED EN 300 220-1 V3.1.1
- RED EN 300 220-2 V3.1.1
- LVD EN 62479:2010
- LVD EN 60335-1:2012 + A11:2014
- LVD EN 60335-2-103:2015
- EMC EN 301 489-1 V2.2.0
- EMC EN 301 489-3 V2.1.1
- EMC EN 55014-1:2017
- EMC EN 55014-2:2015
- EMC EN 61000-3-2:2014
- EMC EN 61000-3-3:2013

- ETSI EN 301 489-1 V2.2.3:2019
- ETSI EN 301 489-3 V2.1.1:2019
- ETSI EN 300 220-1 V3.1.1:2017
- ETSI EN 300 220-2 V3.2.1:2018
- EN 62479:2010

The GUARDIAN module included in this kit complies with the RED 2014/53/EU directive. Its conformity has been assessed pursuant to the applicable standards in force:

- EN 60669-1:1999 + A1:2002 + A2:2008
- EN 60669-2-1:2004 + A1:2009 + A12:2010
- EN 60669-2-2:2006
- EN 62311:2008
- EN 301 489-1 V2.1.1
- EN 301 489-17 V3.1.1
- EN 300 328 V2.1.1

The remote control included with the abovementioned product complies with the RED 2014/53/EU directive. Its conformity has been assessed pursuant to the applicable standards in force:

- EN 62368-1:2014 + A11:2017

Signed in Tours on 05 January 2021 by Alexandre Chaverot, CEO

(Signature)

THOMSON is a brand of TECHNICAL S.A. or its partners operating under licence through:
Avidsen: 19 avenue Marcel Dassault - ZAC des Deux Lions 37200 Tours - France

