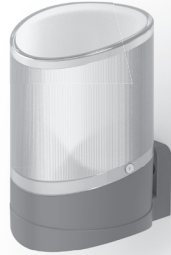
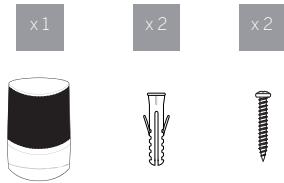


avidsen

EN FLASHING LIGHT
vs
12/24V DC
Ref. 114360



KIT CONTENTS



A - SAFETY INSTRUCTIONS

A1 - OPERATING PRECAUTIONS

- Read this manual carefully before installing.
- Do not allow children to handle the product.

A2 - MAINTENANCE AND CLEANING

- Use a soft, slightly damp cloth to clean your product except for the electrical parts.
- All electrical connections must be performed with the power switched off (safety switch in the OFF position) and battery disconnected.
- Do not use abrasive or corrosive substances.
- Do not spray any products directly onto the unit.

A3 - RECYCLING



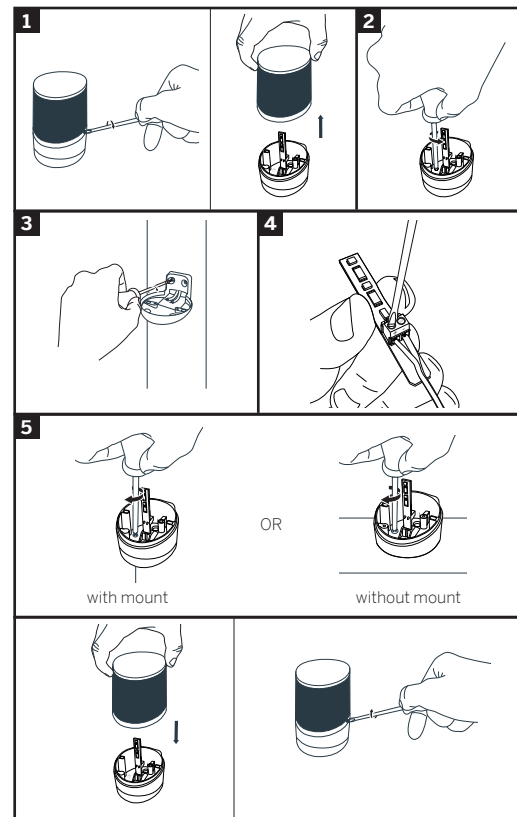
This symbol means that devices no longer in use should not be disposed of with household waste. The hazardous substances they may contain can be harmful to health and the environment. Return the equipment to your local distributor or use the recycling collection service provided by your local council.

B - INSTALLATION

The flashing light must be attached to the top of the pillar on which the motor unit is mounted, and it must be visible from both the inside and the outside.

The flashing light may be fastened on the wall with or without mount.

1. With a screwdriver, remove the transparent part of the flashing light by unscrewing the two screws that hold the top part of the flashing light.
2. Using a screwdriver again, remove the flashing light mount by unscrewing the two screws inside the light.
3. Fasten the flashing light bracket to the wall (If you want to attach the flashing light without the mount, this step isn't necessary).
4. Pass the cables into the flashing light and connect them to the LED light (following "+" and "-" polarity).
5. Screw the flashing light onto its mount or the top of the pillar and screw down the transparent part.



C - TECHNICAL AND LEGAL INFORMATION

C1 - TECHNICAL FEATURES

Type: LED lighting, flashing controlled by a circuit board
Voltage: 12V or 24V DC impulse relay
Power: 4 W
Operating temperature: -20 / +60°C
Protection rating: IP44

C2 - ASSISTANCE AND ADVICE

- If, despite the care we have taken in designing our products and drafting these instructions, you do encounter difficulties when installing your product or you have any questions, we strongly recommend that you contact one of our specialists who will be glad to help.
- If you encounter operating problems during installation or after a few days of use, it is essential for you to be near your system when contacting us. This will make it possible for one of our technicians to diagnose the source of the problem, as it will probably be the result of a setting that is incorrect or an installation that is not to specification. If the problem is caused by the product itself, the technician will give you an RMA number so that you can return the unit to the shop. Without this RMA number, the shop may refuse to exchange your product.

Do you need advice on starting up or installing your product? Please contact our after-sales service team technicians:

0 892 701 369

Monday to Friday, 9am to 12pm, and 2pm to 6pm.

Avidsen undertakes to keep a stock of spare parts for this product throughout the contractual warranty period.

C3 - EU DECLARATION OF CONFORMITY

Declaration of conformity with the EMC Directive

Avidsen hereby declares that the equipment designated below:
Flashing light 114360
The above product complies with the CEM 2014/30/EU directive. Its compliance has been assessed pursuant to the applicable standards in force.
. EN 61000-3-2:2014
. EN 61000-3-3:2013
. EN 55014-1:2017
. EN 55014-2:2015

Tours, 11/08/25

Alexandre Chaverot,
CEO



avidsen
19 avenue Marcel Dassault ZAC des Deux Lions - 37200 Tours
France