

ORANE510 MOTOR DRIVE WITH PIVOTING ARMS For 2-panel swing gates

Ref. 114201

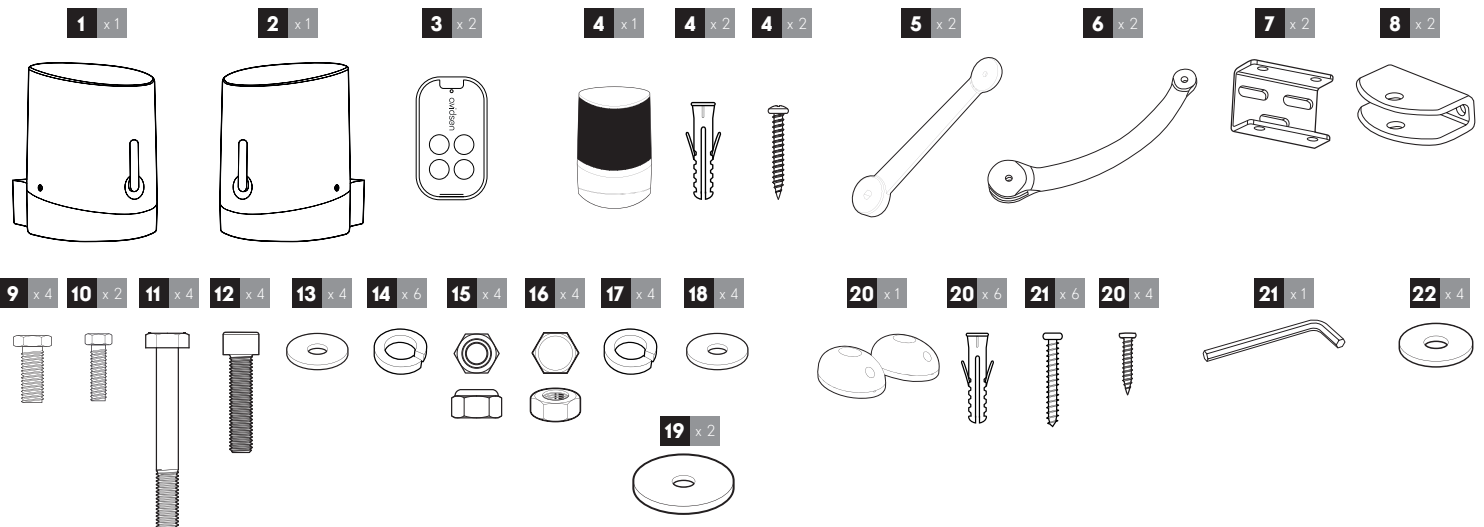


Thank you for purchasing an AVIDSEN automatic gate opener.

This document is a quick start guide detailing the main installation steps as well as the equipment required. To perform the installation, please download the installation manual at the following address: www.avidsen.com

Warning: The safety instructions and installation instructions can be found in the installation manual. Follow all these instructions, as an incorrect installation can cause serious injuries.

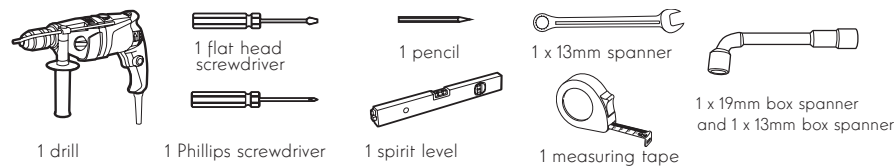
1. DESCRIPTION



1	Main motor with electronic card	7	Post mounting bracket	13	M8 washer	19	M8 washer oversized
2	Secondary motor	8	Gate mounting bracket	14	M8 spring washer	20	Photoeyes and screws
3	Remote control	9	M12 – L40 screw	15	M12 locknut	21	Allen key
4	Flashing light and screws	10	M8 – L25 screw	16	M8 – L25 screw	22	M12 washer
5	Rear arm	11	M10 – L90 screw	17	M10 spring washer		
6	Front arm	12	M8 CHC – L30 screw	18	M10 washer		

2. EQUIPMENT REQUIRED (NOT SUPPLIED)

The tools and screws required for the installation must be in good condition and compliant with applicable safety standards.



<p>Flashing light</p> <p>3m cable 2 x 0.5mm²</p>	<p>Motor</p> <p>8m cable 2 x 1.5mm²</p>	<p>Photoceils</p> <p>10m cable 4 x 6/10</p>	<p>attachment of the brackets on the gate:</p> <p>Choose a screw/nut system appropriate for the thickness of the gate. There are 4 attachment points</p>	<p>attachment of the motors onto the pillars^{Ø12}</p> <p>Ø12x100 x6 Ø8x100 x6</p>
---	--	---	--	--

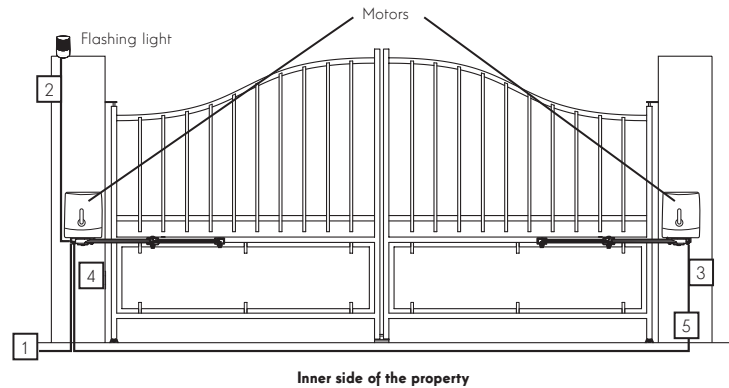
3. INSTALLATION



Safety guidelines: please refer to the installation manual for all safety instructions.
To perform the installation, please download the installation manual at the following address: www.avidsen.com

Overview:

The cables used must be appropriate for outdoor use (such as H07RN-F for example). The cable run between the two posts must comply with applicable standards (NFC 15-100). The power cable of the opposite geared motor must run 80cm deep with red warning mesh.



List of cables:

	Connection	Cable	Max length
1	230VAC power line	Cable 3 x 2.5mm ² (more than 30m long) Cable 3 x 1.5mm ² (less than 30m long)	Unlimited
2	Flashing light	Cable 2 x 0.5mm ²	15m
3	Secondary motor	2 x 1.5mm ² cable	10m
4	Reception photocell (RX)	4 x 6/10 cable	10m
5	Transmission photocell (TX)	4 x 6/10 cable	10m

The installation is a 4-step process:

1. Installation of the motors onto the pillars and gate, and of the flashing light (the main motor is installed on the pillar where the power comes from).

2. Electrical connection:

- of the secondary motor to the electronic card (in the main motor)
- of the flashing light to the electronic card (in the main motor)
- of the photocells to the electronic card (in the main motor)
- connection of the transformer to the mains. This connection must be performed by qualified personnel (electrician, etc.)

3. Adjustments and operation:

Note: Only switch on the system once all connections have been made.

- Read the installation manual chapter on simple adjustments.
- Launch the movement self-learning programme (press "+" for 3 seconds)
- Programme the remote controls:
 - press "-" for three seconds, press "OK", press the remote control button to be memorised, repeat the operation for each remote control
- Choice of operating mode:

By default, automatic closing is deactivated. To activate it:

- Press PROG for three seconds, press "OK", press "+", press "OK"

4. Operational testing: To familiarise yourself with the automatism and ensure it operates properly, read the chapter on usage and conduct operational tests (open/close, initiate obstacle detection, cut the photocell beam). Upon completion of these tests, you may have to modify certain settings (e.g. motor power).

4. DECLARATION OF CONFORMITY

Avidsen declares that the equipment complies with the essential applicable requirements of RED Directive 2014/53/EU.

Directive 2014/35/EU: (protection of users' health and safety)

Directive 2014/30/EU: (protection requirements relating to electromagnetic compatibility).

Directive 2014/53/EU: (efficient use of the radio spectrum, in order to avoid harmful interference).

The full declaration of compliance is available on the website www.avidsen.com

Tours, 12/12/2023

Alexandre Chaverot, CEO

