



SUPPORT  
CALL



GUARANTEE



## VIDEOPHONE - 2-WIRE

EN



ÉLIA

Ref.112290

MAYA

Ref.112291



Eco-  
friendly



Weather-  
resistant



2-wire  
connection



Range

100m



Night  
vision



Screen  
size



Touch  
buttons



POLARITY  
PROTECT



Number  
of melodies



French  
Design

# ***CONTENTS***



## ***A - SAFETY INSTRUCTIONS*** **05**

- 1 - INTRODUCTION 05
- 2 - MAINTENANCE AND CLEANING 05
- 3 - RECYCLING 05

## ***B - PRODUCT DESCRIPTION*** **06**

- 1 - KIT CONTENTS 06
- 2 - MONITOR 06
- 3 - INTERCOM PANEL 07
- 4 - WALL BRACKET 07
- 5 - MAINS ADAPTOR 07

## ***C - INSTALLATION*** **08**

- 1 - INSTALLATION OF THE INTERCOM PANEL 08
- 2 - INSTALLING THE MONITOR 10
- 3 - CONNECTIONS 10
  - 3.1 - Connection between the monitor and the intercom panel 11

## ***D - USING THE PRODUCT*** **12**

- 1 - IDENTIFY AND SPEAK TO THE VISITOR 12
- 2 - ACTIVATE THE INTERCOM PANEL FROM THE MONITOR 12
- 3 - OPENING AN ELECTRIC LOCK AND AN AUTOMATIC CONTROL SYSTEM (OPTIONAL) 12
- 4 - MONITOR SETTINGS 13

## ***E - TECHNICAL AND LEGAL INFORMATION*** **14**

- 1 - TECHNICAL CHARACTERISTICS 14
- 2 - WARRANTY 15
- 3 - HELP AND ADVICE 15
- 4 - PRODUCT RETURNS/AFTER SALES SERVICE 15



### 1 - INTRODUCTION

---

This video intercom system pairs two modules: a receiver-monitor and an easy-to-install and use intercom panel.

#### **Key features:**

- Colour video reception: when a visitor touches the intercom panel call button, the panel immediately transmits the image to the screen and a chime indicates the visitor's presence.
- Short-circuit protection
- Reverse polarity protection
- Automatic exposure correction: the video camera automatically adjusts its exposure to match the ambient light conditions.
- Enables control over two entrances (lock and automated entryway).
- Integrated infrared vision enables the video camera to identify visitors without needing additional light.
- Opening the door and a control system: by pressing buttons on the monitor, you can control an electric lock and a dry contact for an automated entryway (not included).

**IMPORTANT:** These instructions should be read carefully prior to installation. In the case of any problems, our Hotline technicians are at your service to provide you with any information you may need.

**WARNING:** any connection error may cause damage to the device and void the warranty.

### 2 - MAINTENANCE AND INSTALLATION GUIDANCE

---

Before installing the intercom, it is important to check the following points:

- Do not install in cases of extreme humidity, temperatures, corrosion risk or dust.
- Do not expose to direct sunlight, rain, or high humidity.
- Do not plug the device into a multi-socket plug adaptor or extension cord.
- Do not install near other electronic devices such as computers, televisions or video recorders.
- Do not install near acidic chemicals, ammonia or sources of toxic gases.
- Do not clean with abrasive or corrosive products. Use a damp cloth with soapy water.
- Unplug the device if it is not being used for an extended period of time.
- Do not plug the device into national telecommunications installations.
- The cable between the monitor and intercom panel must not be extended. Avoid junctions (insulating screw joints, soldered joints, etc.)

### 3 - RECYCLING

---

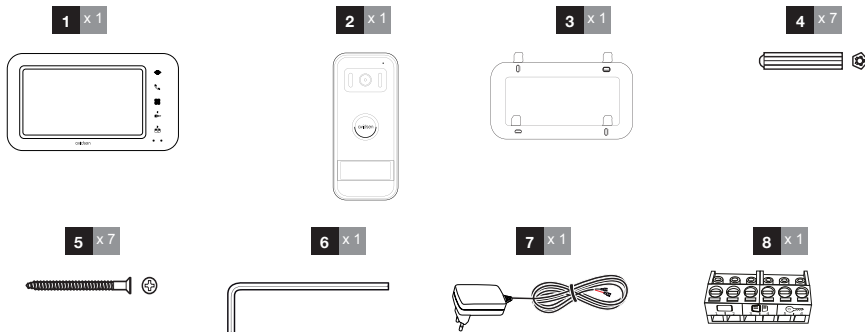


This symbol means that devices no longer in use should not be disposed of with household waste as they are likely to contain hazardous substances that are dangerous to health and the environment. Return the equipment to your local distributor or use the recycling collection service provided by your local council.



## B - PRODUCT DESCRIPTION

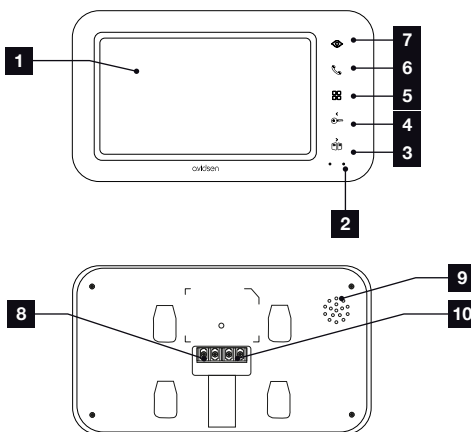
### 1 - CONTENTS OF THE KIT



1	Monitor
2	Intercom panel
3	Monitor wall bracket
4	Dowels (4 for the monitor, 3 for the intercom panel)

5	Screws (4 for the monitor, 3 for the intercom panel)
6	Allen key
7	Mains adaptor
8	Snap-on terminal block for the intercom panel

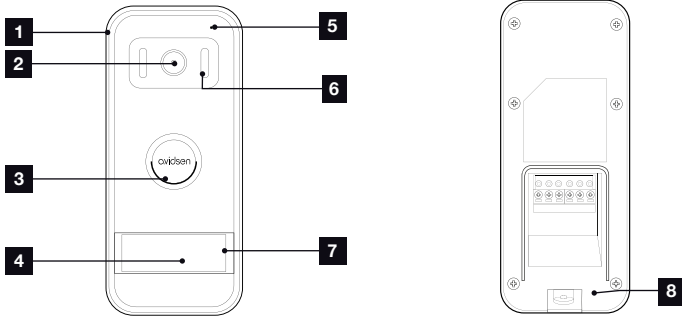
### 2 - MONITOR



1	7" LCD screen
2	Microphone
3	Door opening button or right arrow
4	Electric strike plate button or left arrow
5	Menu access

6	Handset button to answer calls
7	Surveillance mode to view the intercom panel
8	Electric strike plate button or left arrow
9	Loudspeaker
10	Communication terminals

### 3 - INTERCOM PANEL



1	Protective hood
2	Lens
3	Loudspeaker
4	Name label

5	Microphone
6	Infrared lighting
7	Call button
8	Detachable connection terminals

### 4 - WALL BRACKET

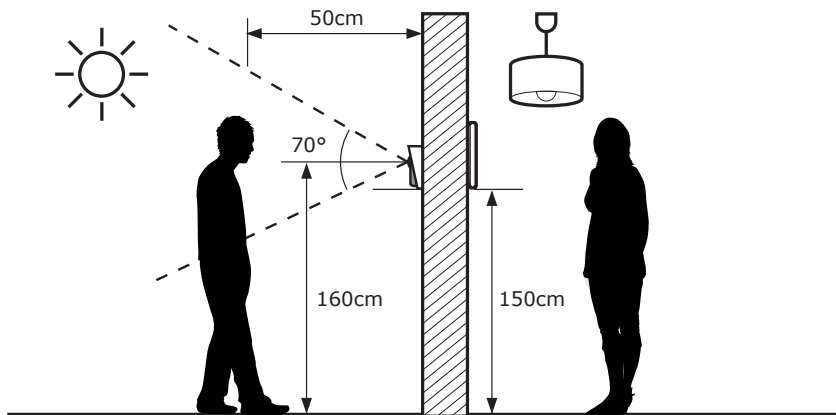
The monitor is designed to be fixed to the wall. A wall bracket and the necessary fasteners are included.

### 5 - MAINS ADAPTER

A 230 Vac 50 Hz/17 Vdc 1.5 A mains adapter for powering the monitor is included in the kit. Do not use other power supplies as they could cause irreparable damage to the device and invalidate the warranty. Do not cut or extend the wire of the mains adapter or the warranty will be void.

## C - INSTALLATION

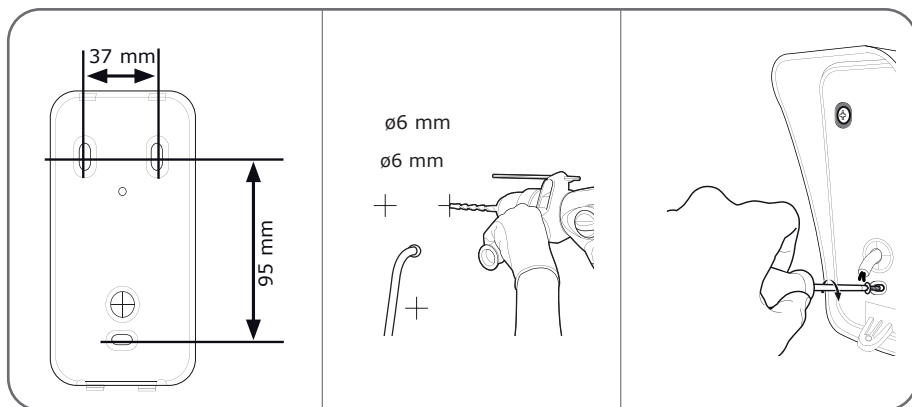
The recommended installation height for the intercom panel is about 160 cm from the ground and 150 cm from the floor for the indoor unit.



**NOTE:** For obvious safety reasons, the connections must only be made after shutting off the power supply.

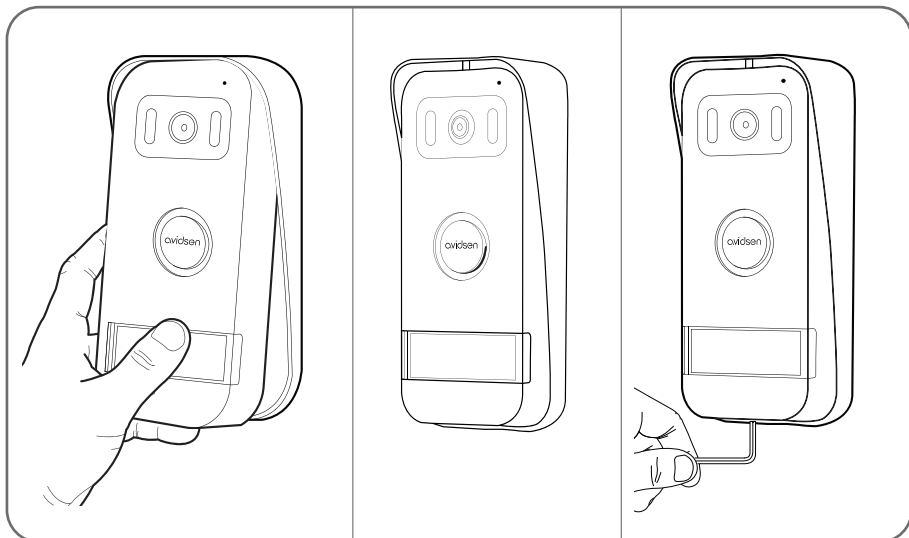
### 1 - INTERCOM PANEL INSTALLATION

Attach the intercom panel hood to your support using the screws and wall plugs suited to the support (the screws and plugs supplied are suitable for solid walls).

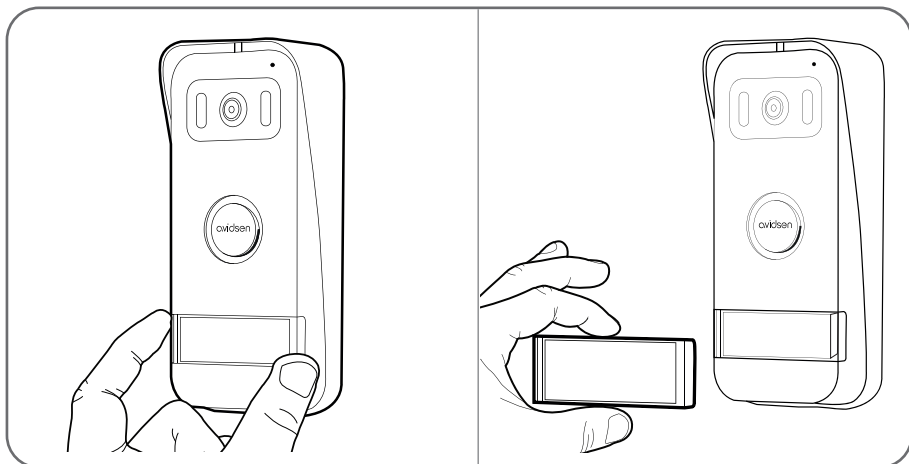


After making the connections on the intercom panel (see the connections paragraph), put the intercom panel into the hood.

Then screw the intercom panel to the hood with the screw provided.



Put on the name label.

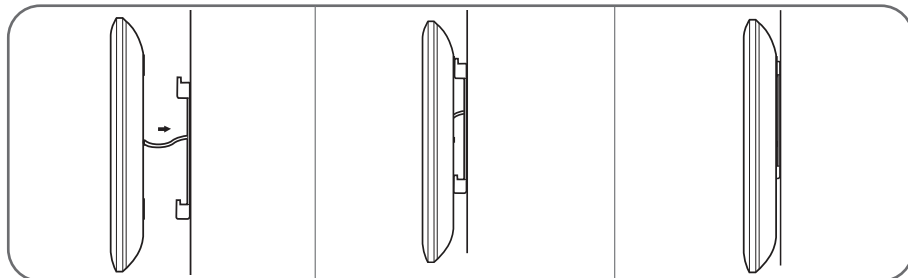
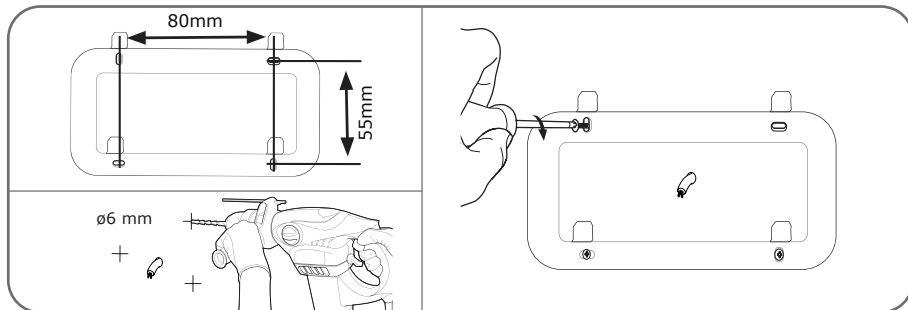


## C - INSTALLATION

### 2 - INSTALLING THE MONITOR

Attach the wall mount to the wall using the screws and wall plugs suited to the support (the screws and plugs supplied are suitable for solid walls).

After connecting the monitor (refer to the "connections" paragraph), fit the monitor onto its support.



### 3 - CONNECTIONS

- Do not increase the number of insulating screw joints or connectors on the connecting wire between the intercom panel and the monitor
- Keep the connecting wire between the intercom panel and the monitor more than 50 cm away from any electromagnetic interference (230 V cable, WiFi device, microwave ovens, etc.)
- You can connect and use an electric strike plate (not provided) with your intercom panel, with mechanical memory.

#### Between the monitor and the intercom panel (100m maximum)

To ensure good audio and video quality, it is recommended to not use more than 100m of cable between the intercom and the intercom panel. Connect the wires as follows (incorrect wiring can damage the intercom panel). The cable's length determines which cable section is to be used:

Cable length	Section to use
0 to 50 m	0.75 mm <sup>2</sup>
50 m to 100 m	1.5 mm <sup>2</sup>

#### Between the intercom panel and an electric strike plate (not included)

Use a 12V/1.1A maximum electric strike plate with mechanical memory.

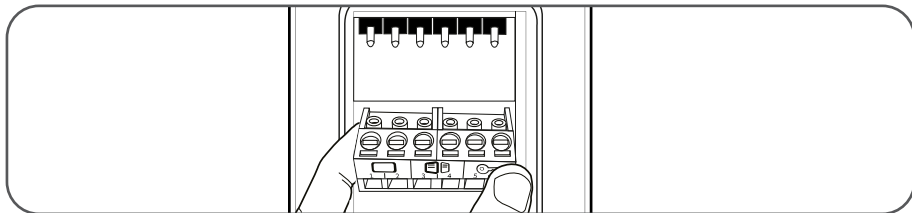
For the connection between the intercom panel and the door release, use a cable of this kind:

Cable length	Section to use
0 to 50 m	0.75 mm <sup>2</sup>

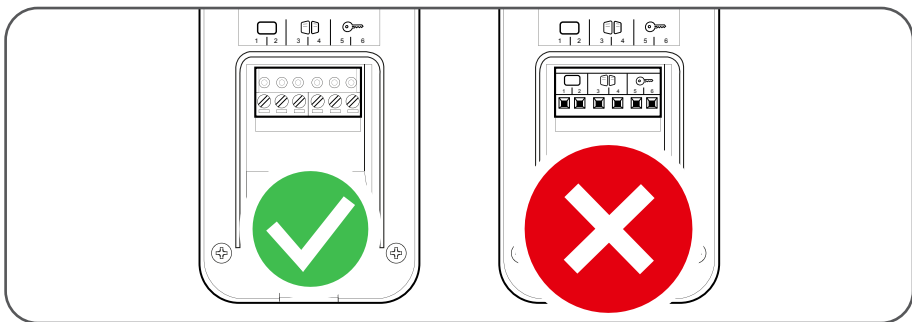
**Between the intercom panel and the automated gate (not included)**

Section to use: Min. 0.75 mm<sup>2</sup>

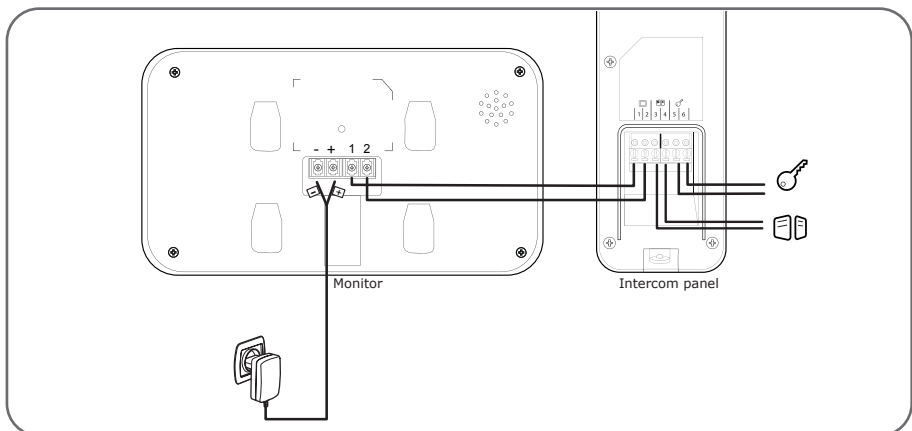
The intercom panel's terminal blocks can be removed for easier assembly.



**Warning:** the terminal blocks have a meaning and must be installed correctly. Incorrect installation may result in random operation and loss of certain functions.



**3.1 - CONNECTION BETWEEN THE MONITOR AND THE INTERCOM PANEL**

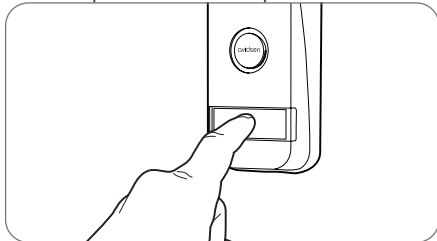


**IMPORTANT:** connect terminal blocks 3 and 4 directly to the opening/closing contact of the automatic control system (automated entryway wired control system input).



## D - USING THE PRODUCT

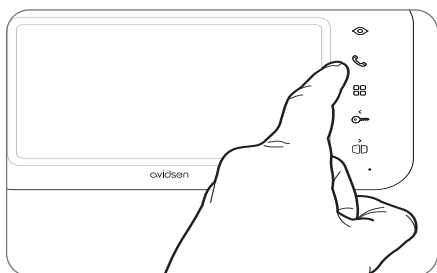
### 1 - IDENTIFY AND SPEAK TO THE VISITOR

The visitor presses the intercom panel's call button:





The chime sounds through the monitor's speaker and the intercom panel's video camera is activated. If the visitor is positioned within the camera's field of vision, their image will appear on the monitor for 30 seconds. After 30 seconds, the monitor will return to sleep mode.

To speak with the visitor, press the  button. To end the conversation and deactivate the intercom panel, press the  button.




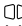
### 2 - ACTIVATE THE INTERCOM PANEL FROM THE MONITOR

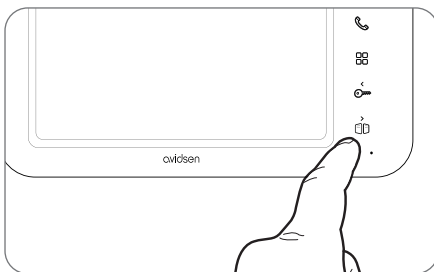
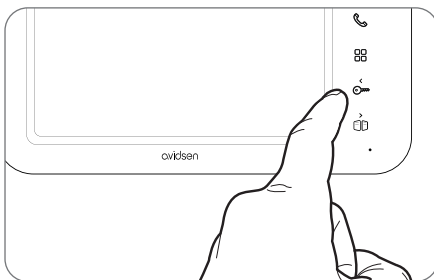
To identify a visitor without them knowing they are being observed or to simply look outside, press the  button: the view from the intercom panel will then appear on the screen for 60 seconds.



If you wish to communicate directly with the outside, press once on the  button when the external video camera is displayed.

This particularly useful feature allows you to observe the visitor, even if they haven't pressed the call button on the intercom panel.


### 3 - OPENING AN ELECTRIC LOCK AND AN AUTOMATIC CONTROL SYSTEM (OPTIONAL)


If the device is equipped with an electric lock and/or an automatic control system (see "Connection" paragraph), press the  button (for the lock) or the  button (for the automatic control system) to let a visitor enter.



Warning: the screen must be switched on and audio enabled before the dry contact and powered output controls can function. If the screen is off, it must be switched on with the  button and then the  button.

#### 4 - MONITOR SETTINGS

With the screen on, press the  button to display the following screen:

Browse the sub-menus by pressing the  buttons

BRT .		.....20
CON .		.....18
COL .		.....18
CALL .		.....21
INCOME .		05
RING .		05

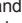
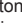
• **BRT:**

**Brightness:** press the  and  buttons to decrease or increase the brightness level of the image.

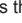
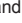
• **CON:**

**Contrast:** press the  and  buttons to decrease or increase the contrast level of the image.

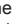

• **COL:**

**Colour:** press the  and  buttons to decrease or increase the saturation level of the image.

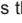

• **CALL:**

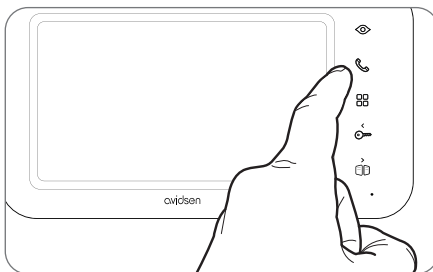
**Microphone volume:** press the  and  buttons to increase or decrease the microphone volume.


• **INCOME:**

**Chime volume:** press the  and  buttons to decrease or increase the ring volume.

• **RING:**

**Choose the chime:** press the  and  buttons to select the desired chime.



Once in the RING sub-menu, press the  button to exit.

### 1 - TECHNICAL CHARACTERISTICS

MONITOR	
<i>Screen</i>	Ultra-flat 7" colour LCD
<i>Video standard</i>	PAL/NTSC
<i>Resolution</i>	800 x 480
<i>Power supply</i>	with 230 VAC 50 Hz / 17 VDC 1.5 A mains adapter included
<i>Protection</i>	Short circuit and reverse polarity protection
<i>Transmission system (audio and video)</i>	2-wire
<i>Ideal operating temperature range</i>	-20 °C to 50 °C
<i>Max. degree of humidity</i>	85%
<i>Number of doorbell melodies</i>	6
<i>Dimensions</i>	217 x 124 x 19 mm

Intercom panel	
<i>Video camera</i>	CMOS 420TVL
<i>Lens</i>	100° horizontal viewing angle
<i>Power supply</i>	13 VDC supplied by the monitor
<i>Max. consumption</i>	200 mA
<i>Brightness</i>	min. 0 lux
<i>Night vision</i>	from 0.5 to 1 m
<i>Dimensions</i>	164 x 70 x 39 mm
<i>Protection rating</i>	IP44

### 2 - WARRANTY

- This product is guaranteed for parts and labour for 3 years from the date of purchase. Proof of purchase must be retained for the duration of the warranty period.
- The warranty does not cover damage caused by negligence, knocks or accidents.
- The parts of this product must not be opened or repaired by any persons not employed by Avidsen.
- The warranty will be void if the device is tampered with.
- Do not cut or extend the wire of the mains adapter or the warranty will be void.

### 3 - HELP AND SUGGESTIONS

- If, in spite of the care we have taken in designing our products and drafting these instructions, you encounter difficulties when installing your product or you have any questions, we recommend you contact one of our specialists who will be glad to help.
- If you have any operating problems during or shortly after the installation, please ensure you are next to your installation when contacting us, so that one of our technicians can diagnose the source of the problem, as this is often caused by an incorrect setting or an installation that is not to specification.

Please contact our after-sales service team technicians:

**0 892 701 369** Service 0,35 € / min  
+ prix appel

Monday to Friday, 9am to 12pm, and 2pm to 6pm.

### 4 - PRODUCT RETURNS - AFTER SALES SERVICE

If, despite the care we have taken in designing and manufacturing your product, it needs to be returned to our customer service centre, you can check the progress of the work on our website at the following address:

<http://sav.avidsen.com>

Avidsen undertakes to keep a stock of spare parts for this product throughout the contractual warranty period.



Séparez les éléments avant de trier



avidsen

19 Avenue Marcel Dassault  
ZAC des Deux Lions - 37200 Tours - France